

**THE ESHER HALL ANTIQUES & FINE ART FAIR RETURNS  
TO SANDOWN PARK RACECOURSE IN ESHER, SURREY  
Friday 8 – Sunday 10 October 2010**



Rosewood and brass inlaid Regency chiffonier, c1820, £7,750 from Arkell Antiques of Dorking

**THE  
ANTIQUES  
DEALERS  
FAIR  
LIMITED**

The Esher Hall  
Antiques and Fine Art Fair  
8 – 10 October 2010



Emerald, diamond and platinum  
target ring, £5,500 from Plaza

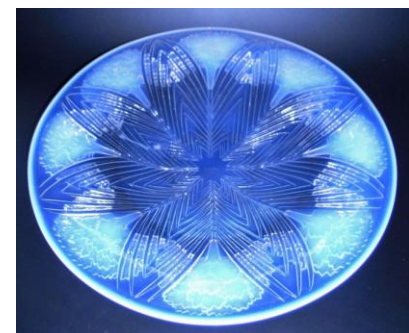
Sandown Park Racecourse in Esher, Surrey provides a great location for The Esher Hall Antiques & Fine Art Fair which runs from Friday 8 to Sunday 10 October 2010. Returning for its third year the fair brings together 40 prestigious dealers from all over the UK, transforming the area into a showcase of the very best antiques and fine art for collectors and lovers of antiques, interior designers and private buyers.

The dealers, mainly members of either The British Antique Dealers' Association or LAPADA the Association of Art & Antiques Dealers, are specialists in a wide range of disciplines including town and country furniture, paintings, book illustrations, jewellery, sculpture, oriental carpets and rugs, silver, glass, ceramics and objets d'art.

An outstanding piece of furniture comes from LAPADA dealer **W R Harvey & Co (Antiques) Ltd** of Witney who are bringing an important George I period burr walnut bureau bookcase, c 1720, with a price label of £95,000. More highlights can be found on **Arkell Antiques** of Dorking's stand, who specialise in 18th and 19th century furniture. They are exhibiting a very rare and unusual burr yew and rosewood chiffonier cabinet bearing the maker's label, Joseph Goldsmith Cabinet Maker (mentioned in History of Furniture Makers 1660-1840) who worked in Horsham, West Sussex in the 1830s, price £8,600 (this piece was made approximately 180 years ago and only a stone's throw away from Arkell Antiques shop in Dorking).

Among the highlights being shown by **Garret & Hurst Sculpture** include *Halia* by Professor A. Piazza-Carrara, c1900 and carved from Carrara marble, priced at £25,950. Piazza-Carrara was an Italian figural sculptor who worked in Italy and the South of France. Another delightful piece is *Femme a la Coquille* by Emmanuel Villanis, c1895. This bronze figure is of a maiden reclining on a seashell and listening for the sound of the sea, price £14,750.

Cont'd...



René Lalique opalescent Oeille  
charger, 1932, £1,980 from M&D Moir

P.O. Box 119  
Cranbrook  
Kent TN18 5WB  
Tel/Fax  
01797 252030  
E-mail  
info@adfl.co.uk  
Web  
www.adfl.co.uk  
Reg. no. 04293279  
(England & Wales)

Art Nouveau and Art Deco glass has a great following and specialist Surrey dealers **M & D Moir** are showing pieces by the great masters of French glass, René Lalique, Emile Gallé and the Daum brothers. One such piece is a chameleon pendant, signed 1923, by Amalric Walter who had worked in the Daum factory until the end of the First World War, priced at £2,200.

**Art World Gallery** of Evesham is bringing an exciting mix of Modern British and Contemporary paintings in addition to a fine collection of French and Italian artists such as *Septembre* by Patrick Cornée at £1,950. Other picture dealers include Cheshire based **Baron Fine Art**, **Cambridge Fine Art** and art of the imagination from **Books Illustrated Ltd** with original drawings and paintings by Arthur Rackham and more recent book illustrators like Paul Kidby, who designs for Terry Pratchett's books.

There will be plenty of sparkle at the fair with **T Robert, Plaza, St. James/Authentiques and Shapiro & Co**, who are exhibiting a wide range of fine and antique jewellery as well as objets d'art.

Once again Haslemere based **Global Tiger Patrol** is the benefiting charity for the fair. Global Tiger Patrol works to conserve the highly endangered tiger in the wild ([www.globaltigerpatrol.org](http://www.globaltigerpatrol.org)). A maximum of 3,000 wild tigers are believed to exist worldwide in their natural habitat, when merely a century ago 100,000 of these magnificent creatures roamed the forests and jungles across Asia and the Russian Far East.

**PRESS INFORMATION AND JPEG IMAGES AVAILABLE FROM:**

Gail McGuffie PR  
 T: +44 (0)20 8568 5466  
 M: +44 (0)7885 10 33 53  
 E: MGailMcG@aol.com

IONA PR  
 +44 (0)1451 832 268  
 +44 (0)7721 030 825  
 iona@ionapr.com

**Notes to Editors:**

The fair is vetted for quality and authenticity with a dateline of 1970 for most disciplines.

- Event:** The Esher Hall Antiques and Fine Art Fair
- Venue:** Esher Hall, Sandown Park Racecourse, Esher, Surrey KT10 9AJ
- Date & opening times:** Friday 8 - Sunday 10 October 2010.  
 Friday 12noon - 8pm  
 Saturday 10.30am - 6pm  
 Sunday 10.30am - 5pm
- Tickets & enquiries:** £5, including catalogue (and re-admission)  
 The Antiques Dealers Fair Ltd  
 Telephone: +44 (0)1797 252030 or [info@adfl.co.uk](mailto:info@adfl.co.uk)
- Transport:** M25 (Junction 10), A3 from London and Guildford.  
 Ample free parking.  
 Railway Station: Esher
- Charity:** Global Tiger Patrol [www.globaltigerpatrol.org](http://www.globaltigerpatrol.org)
- Website:** [www.esherhallfair.com](http://www.esherhallfair.com)



Hand woven silk Qum (detail), £3,900 from M&N Oriental Rugs



A fine erotic cold painted bronze by Franz Xavier Bergman, with hinged arm, c1910, £3,750 from T Robert



George I period burr walnut bureau bookcase, c 1720, £95,000 from WR Harvey & Co (Antiques) Ltd.